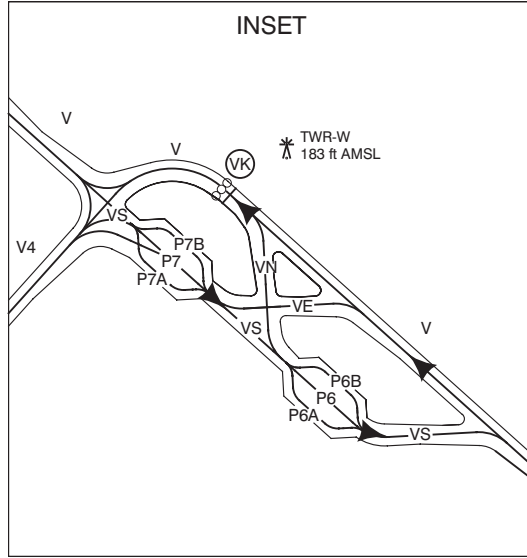
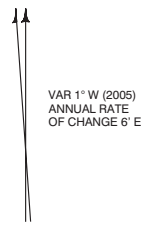


Aerodrome elevation
-11 ft AMSL

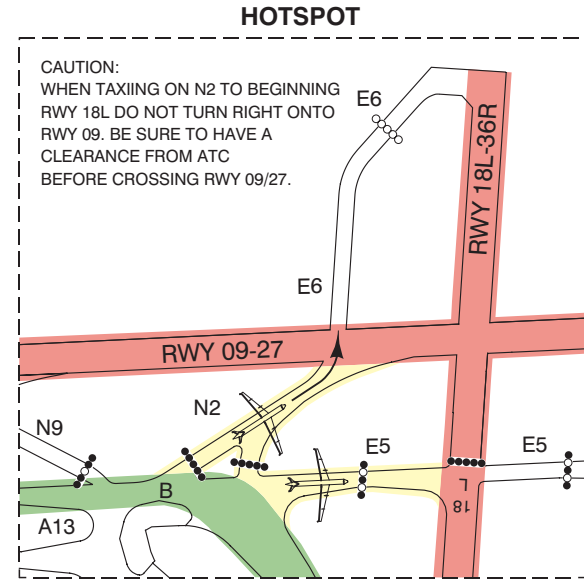
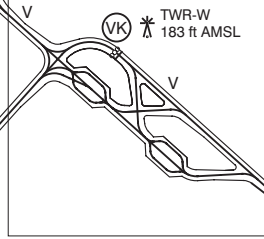
TAXI RULES

1. All aircraft give way to aircraft vacating runways.
2. All aircraft give way to aircraft on TWY A and TWY B (except if rule 1 is applicable).
3. After landing contact Ground Control on the following frequency:

RWY	FREQ
06/24	121.700 MHz
04/22	121.800 MHz
09/27	121.800 MHz
18C/36C	121.800 MHz
18L/36R	121.800 MHz
18R	121.900 MHz

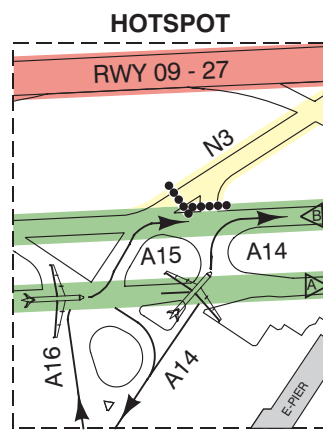


FOR TWY NAMES SEE INSET

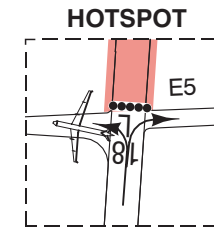


HOTSPOT
CAUTION:
WHEN TAXIING ON N2 TO BEGINNING
RWY 18L DO NOT TURN RIGHT ONTO
RWY 09. BE SURE TO HAVE A
CLEARANCE FROM ATC
BEFORE CROSSING RWY 09/27.

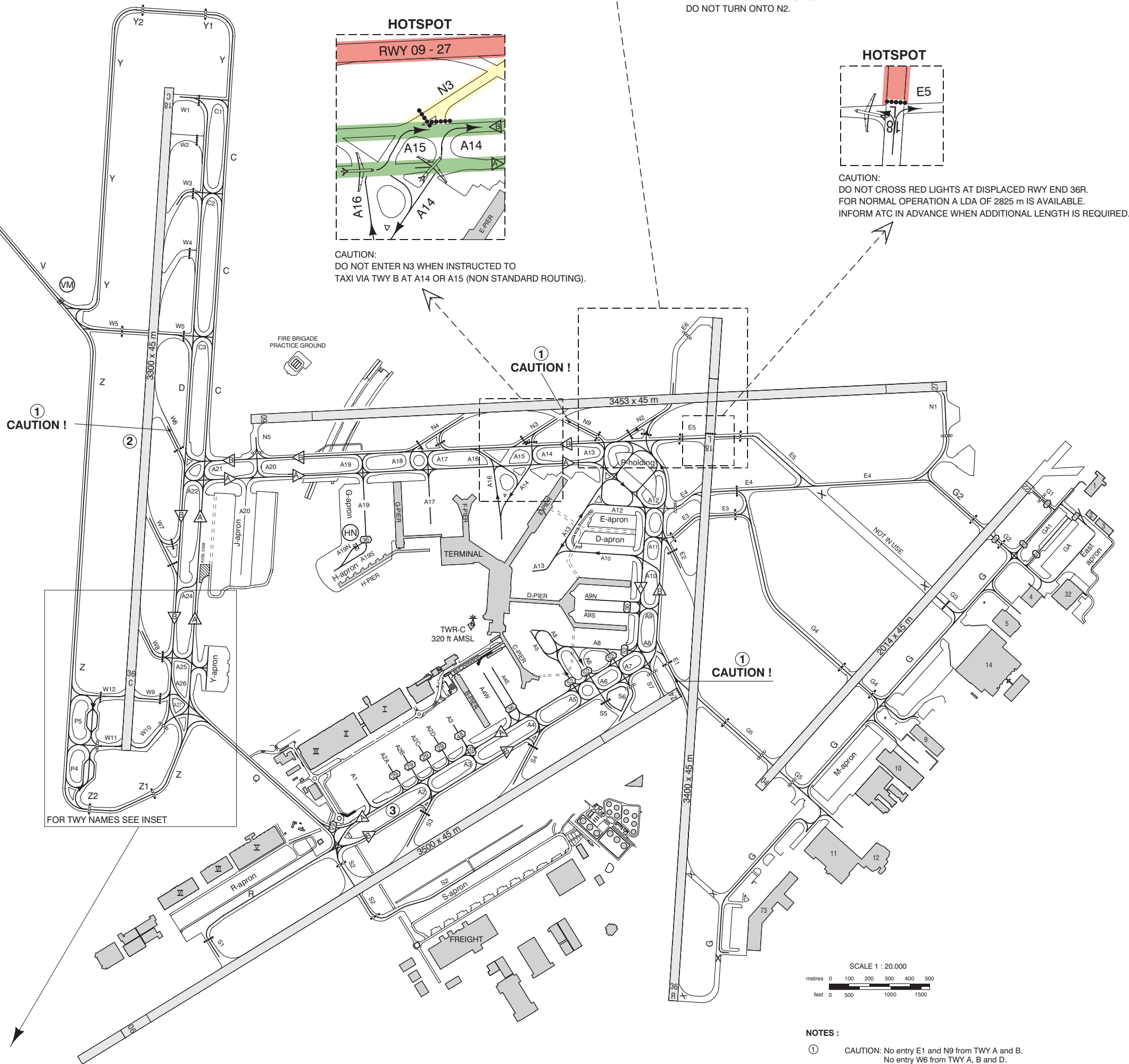
CAUTION:
WHEN TAXIING TO RWY 18L E5
DO NOT TURN ONTO N2.



HOTSPOT
CAUTION:
DO NOT ENTER N3 WHEN INSTRUCTED TO
TAXI VIA TWY B AT A14 OR A15 (NON STANDARD ROUTING).



HOTSPOT
CAUTION:
DO NOT CROSS RED LIGHTS AT DISPLACED RWY END 36R.
FOR NORMAL OPERATION A LDA OF 2825 m IS AVAILABLE.
INFORM ATC IN ADVANCE WHEN ADDITIONAL LENGTH IS REQUIRED.

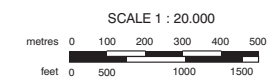
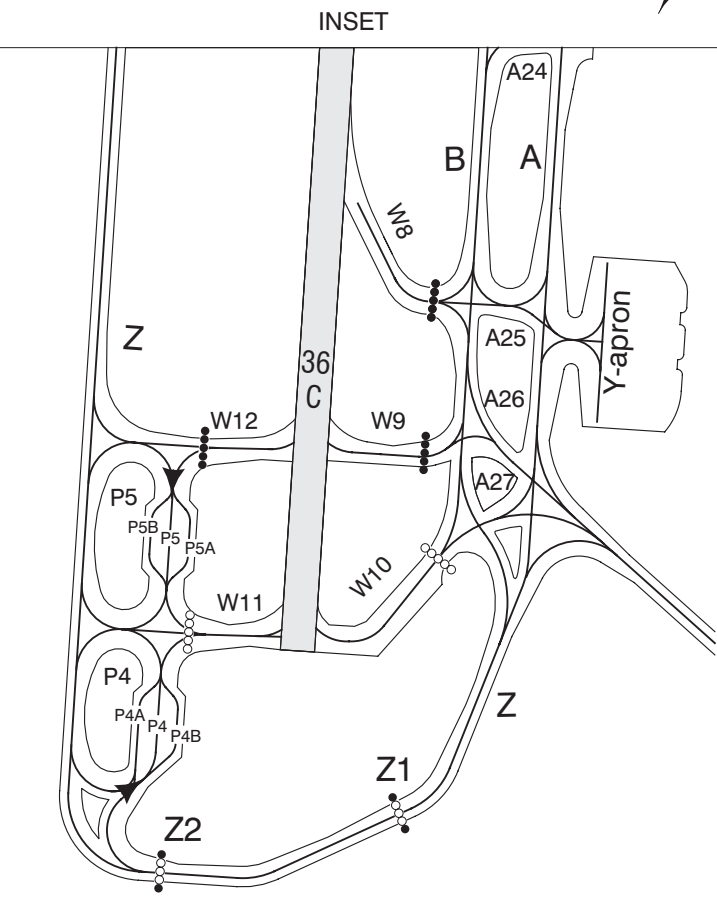


CAUTION !

CAUTION !

CAUTION !

FOR TWY NAMES SEE INSET



NOTES :

- 1 CAUTION: No entry E1 and N9 from TWY A and B.
No entry W6 from TWY A, B and D.
- 2 R/T instruction inbound 'VIA NORTH': taxi via TWY A and Northside of airport.
R/T instruction outbound 'VIA NORTH': taxi via TWY B and Northside of airport.
R/T instruction inbound 'VIA SOUTH': taxi via TWY Q.
R/T instruction outbound 'VIA SOUTH': taxi via TWY A and Q.
- 3 Maximum wingspan TWY A between A1 and A3 limited to 65 metres.

LEGEND

- H24 FIXED STOP BAR
- H24 SWITCHABLE STOP BAR
- LOW VISIBILITY PROCEDURES SWITCHABLE STOP BAR
- LOW VISIBILITY PROCEDURES FIXED STOP BAR
- SWITCHABLE STOP BAR ONLY IN USE IN CASE OF LANDING OR DEPARTING 18C/36C
- INTERMEDIATE HOLDING POSITION
- MAX WINGSPAN 29 m LIMITED MAXIMUM WINGSPAN ENTRY
- COMPULSORY TAXI ROUTING. ALL OTHER ROUTES MAY BE USED TWO-WAY DEPENDING ON RUNWAY COMBINATION
- HANGAR NO. 12
- FREIGHT STATION NO. III
- CROSSING VEHICLES
- NOT IN USE

HOTSPOT

- RUNWAY
- ENTRY / EXIT
- TAXIWAY